



## **Modular Classroom Unit 7m x 7m**

### **Classroom Structures: Madagascar**

**Project: Funded by World Bank.**

**Product  
Presentation  
Provided**



**This Package Includes:**

- Rendered Models
  - Photographs
- Rendered Wall Finish Details
  - Plans & Details
- Hexaport's Product Specifications & More!!!



**Product  
Presentation  
Provided**



**Modular Classroom Unit 7m x 7m**



**Product  
Presentation  
Provided**

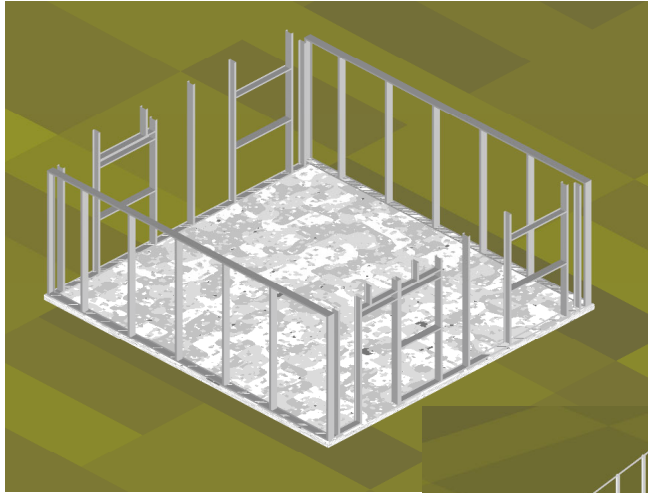


**Modular Classroom Unit 7m x 7m**



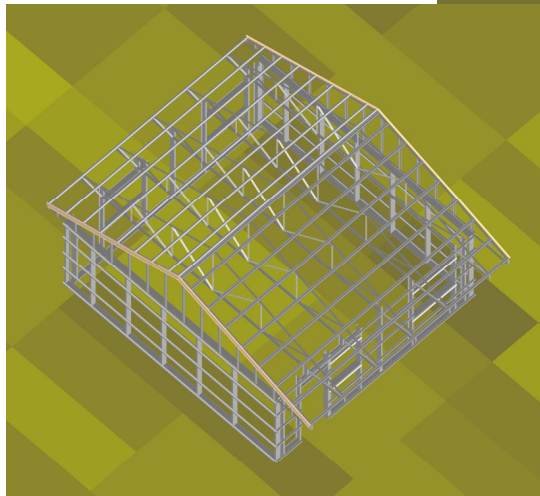
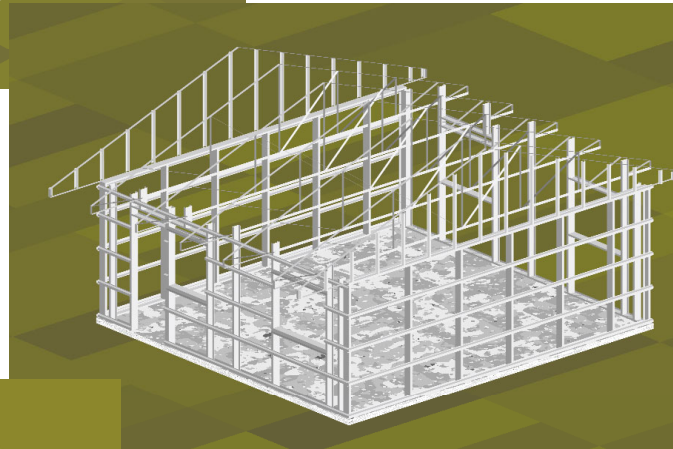
**Product  
Presentation  
Provided**

## The Structure



**Basic  
Framing  
Level**

**Wall Girts  
& Trusses  
Installed**



**Roof Purlins  
Installed**

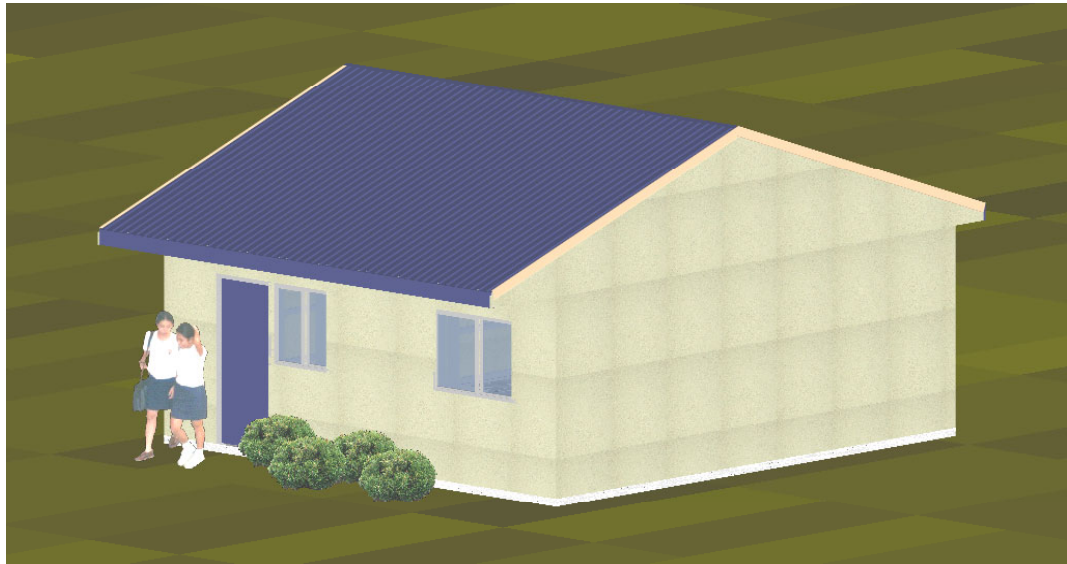
**Ready For Finishes**

**Modular Classroom Unit 7m x 7m**



# The Finishes

**Product  
Presentation  
Provided**



**Finishes Added!!**

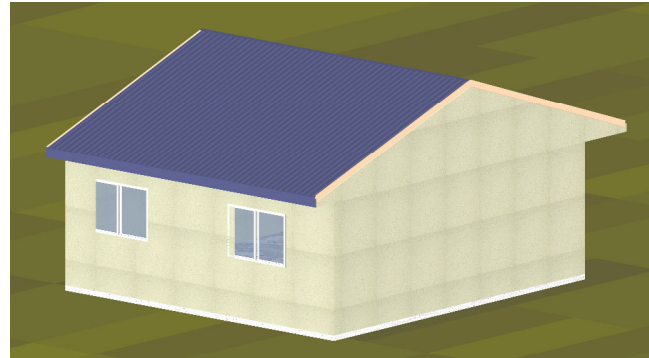
Stucco Exterior

Metal Roofing & Trim

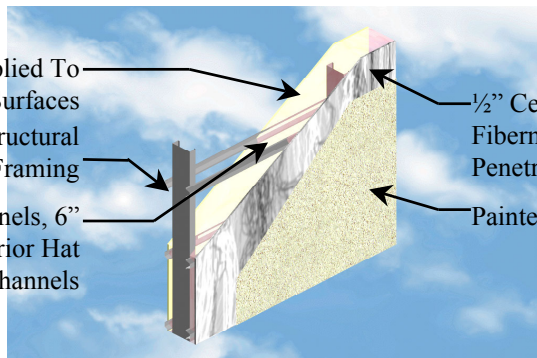
Windows (TBD)

Doors (TBD)

Insulation & Etc.



1/2" Cement Board Applied To  
Interior Surfaces  
Light Gauge Steel Structural  
Wall Framing  
1-1/2" Exterior Hat Channels, 6"  
Strong Studs, & 7/8" Interior Hat  
Channels



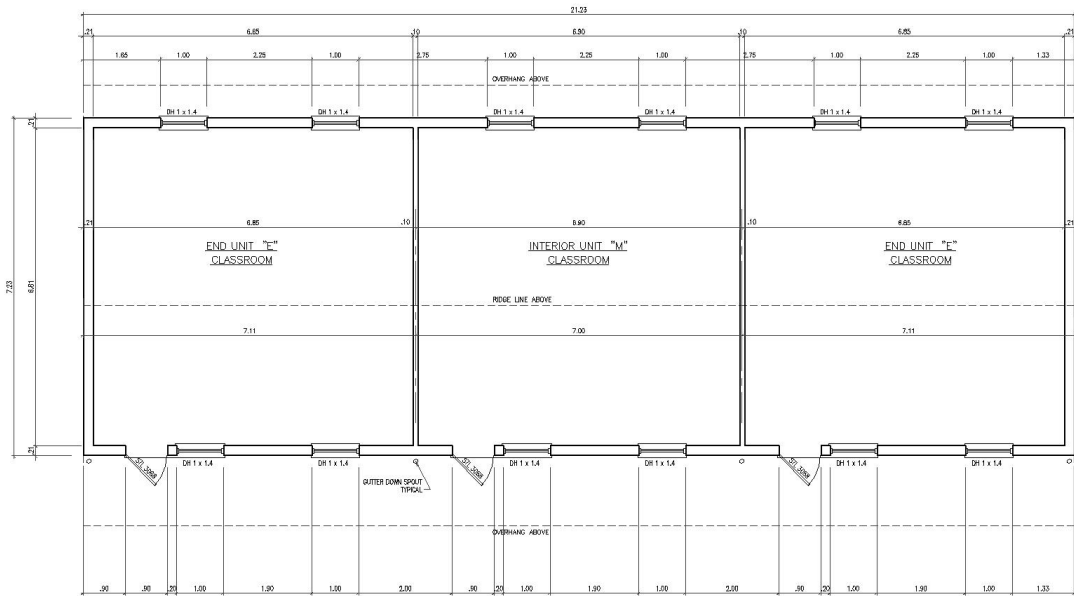
1/2" Cement Board With 4oz.  
Fibermesh Tape At Joints And  
Penetrations  
Painted Finish

**Typical Exterior / Interior  
Finishes**

**Modular Classroom Unit 7m x 7m**

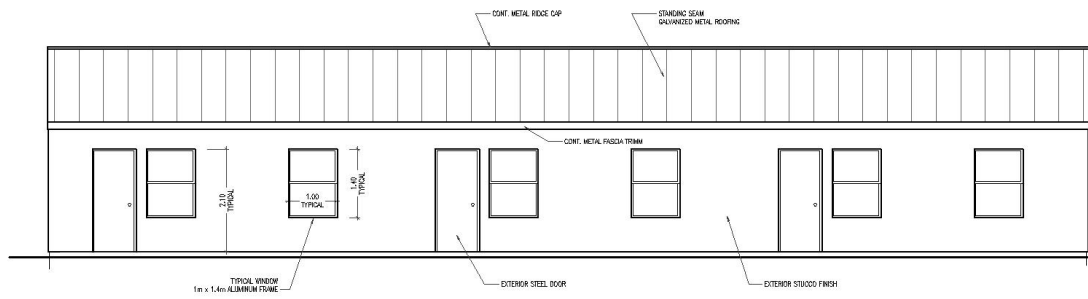


**Product  
Presentation  
Provided**



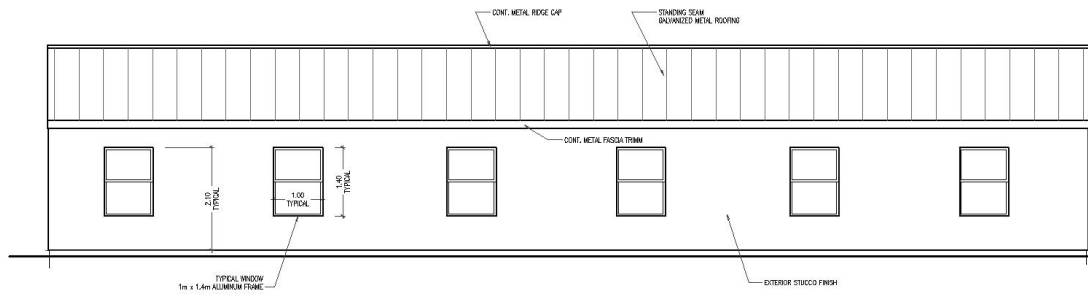
**FLOOR PLAN**

SCALE: 1 : 50



**FRONT ELEVATION**

SCALE: 1 : 50



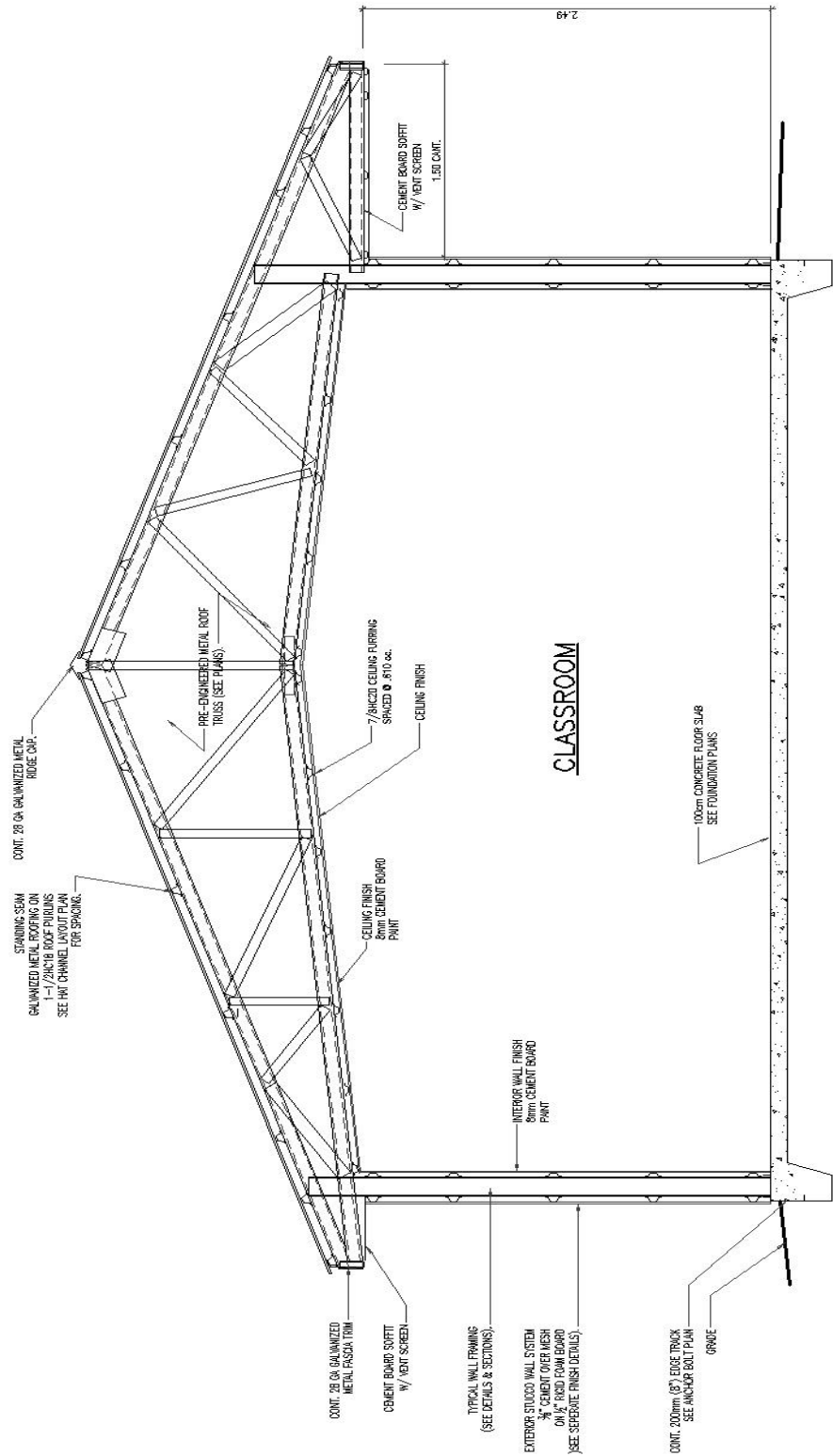
**REAR ELEVATION**

SCALE: 1 : 50

**Modular Classroom Unit 7m x 7m**



**Product  
Presentation  
Provided for:**



# Modular Classroom Unit 7m x 7m



## Technical Specifications

**Product  
Presentation  
Provided for:**

Unit Area:	49m <sup>2</sup> (527.5ft <sup>2</sup> )
Maximum Joined Units:	4
Seating Capacity:	40 Pupils
Foundation Type:	Reinforced Concrete Slab Optional: Helical Pier System
Wind Capacity:	180 KPH (140 MPH)
Structural Frame System:	I.B.S. Cold-Formed Steel 1.2m Column Spacing & Truss Spacing, .60m Wall & Roof Purlin Spacing
Exterior Finishes:	Standard Painted Cement Stucco, Metal Mesh, Foam Board Substrate
Interior Finishes:	Standard Painted Cement Board
Roofing Type:	30 Year, 26 Gauge Metal Screw-Down, Bright Finish
Fire Rating:	Non-Combustible, 1 Hour (min.)
Design Code(s):	Std. IBC 2000 Building Code <i>AISI "Specification for Design of Cold-Formed Steel Structural Members 2001"</i> ASTM A653
Corrosion Protection:	G60 Galvanization (minimum)
Windows:	Aluminum / Vinyl – Glass
Doors:	Steel w/ Hardware & Keyed Entry
Power:	Optional Solar Packages Available

-Customizable Options Available-

### **Modular Classroom Unit 7m x 7m**



# “Education Pour Tous”

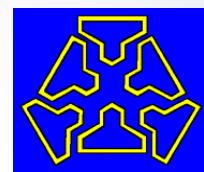
## Madagascar



3,000 Classroom Units



21,000 Roof Trusses



Hexaport International, Ltd  
International Building Systems



75 Independent Contracting Companies



Funded by the World Bank